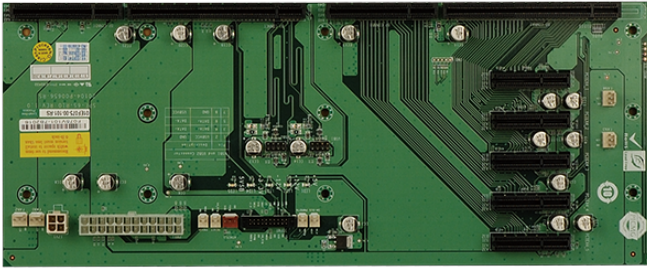


SPE-6S

6-Slot PICMG 1.3 PCIe to PCI Bridge Backplane, 5 PCIe x4, RoHS



Features

Specifications

Physical Characteristics	
Mounting	PAC-106G
	PAC-1000G
I/O Interface	
Expansion	5 x PCIe x4
Power	
Power Supply	24+4-pin ATX

Ordering Information

SPE-6S-R10	6-Slot PICMG 1.3 PCIe to PCI Bridge Backplane, 5 PCIe x4, RoHS
PAC-106GW-R21	6-Slot Full size Chassis, White, W/O PSU, RoHS
PAC-1000GB-R20	6-Slot Full size Chassis, Black, W/O PSU, RoHS