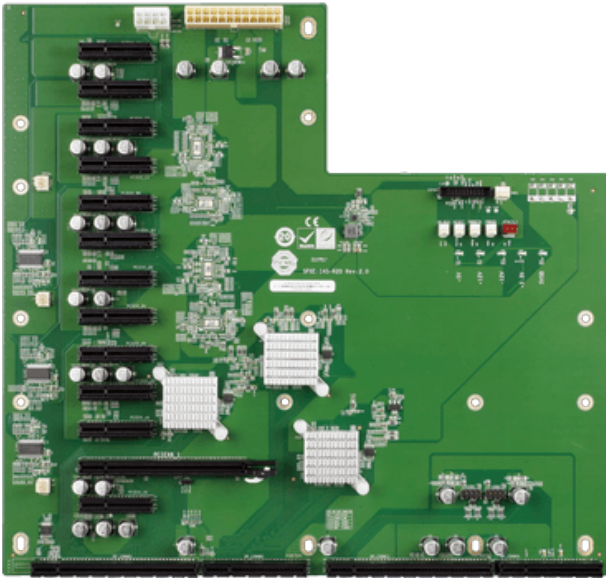


# SPXE-14S

14-Slot PICMG 1.3 PCIe to PCI Bridge Backplane, 1 PCIe x8 w/ x16 slot, 12 PCIe x1, RoHS



## Features

## Specifications

Physical Characteristics	
Mounting	RACK-305G
	RACK-360G
	RACK-3000G
Dimensions (LxWxH) (mm)	327.69 X 311.1
I/O Interface	
Expansion	1 x PCIe x8 :x16 connector
	12 x PCIe x1 :x4 connector
Power	
Power Supply	24+8pin ATX

## Ordering Information

SPXE-14S-R20	14-slot PICMG 1.3 backplane with one PCIe x16 slot (x8 signal) and twelve PCIe x1 slots
RACK-360GW-R22	4U 14-Slot Rackmount Chassis,FP With USB,White,AT Power Switch,W/O PSU,RoHS
RACK-360GB-R22	4U 14-Slot Rackmount Chassis,FP With USB,Black,AT Power Switch,W/O PSU,RoHS
RACK-305GW-R22	4U 14-Slot Rackmount Chassis,White,AT Power Switch,W/O PSU,RoHS
RACK-305GB-R22	4U 14-Slot Rackmount Chassis,Black,AT Power Switch,W/O PSU,RoHS
RACK-3000GW-R21	4U 14-Slot Rackmount Chassis,White,ATX Power Switch,W/O PSU,RoHS
RACK-3000GB-R21	4U 14-Slot Rackmount Chassis,Black,ATX Power Switch,W/O PSU,RoHS