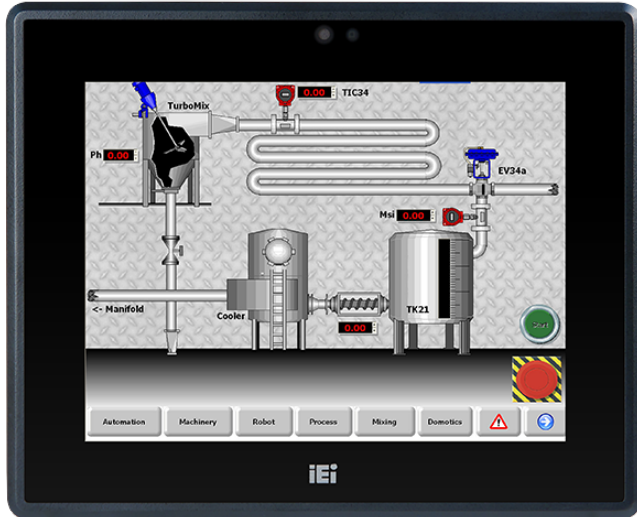


PPC-F10B-BT

5.7"/8"/10.4" 无风扇 Intel® Bay Trail 解决方案



Features

- » 5.7", 8" and 10.4" fanless industrial panel PC
- » 2.0 GHz Intel® Celeron® J1900 quad-core processor or 1.58 GHz Intel® Celeron® N2807 dual-core processor
- » Low power consumption DDR3L memory supported
- » IP 65 compliant front panel
- » 9 V~30 V wide DC input
- » mSATA SSD supported
- » Dual GbE for backup
- » -10°C~50°C extended operating temperature

Specifications

Display	
LCD Size	10.4"
Brightness(cd/m2)	400
Max Resolution	800(W) x 600(H)
Contrast Ratio	700:1
Backlight MTBF(hrs)	30000
System	
CPU	Intel® Celeron® J1900 quad-core on-board SoC, 2GHz
Storage	1 x mSATA, 1 x 2.5" HDD Bay
I/O Interface	
RAM	1 x 204-pin DDR3L SO-DIMM slots (max. 8GB)
I/O Ports and Switches	1 x RJ-45 LAN port
	1 x RS-232 COM port (DB-9 connector)
	(RI/5V/12V)
	1 x RS-422/485
	2 x USB 3.0
	2 x USB 2.0
	1 x 9 V~30 V DC lockable DC jack (2-pin)
	1 x Audio port (line-out)
	1 x Power switch
Power	
Power adapter	9V~30VDC
Environment	
Operating Temperature	-10°C~50°C (14°F~122°F)
Safety & EMC	CE & FCC Class A certified
Humidity	10% to 95% (non-condensing)
Storage Temperature	-20°C~60°C (-4°F~140°F)
IP Level	Front IP 65
Physical Characteristics	

Color	Black C
Mounting	Stand, panel mount, rack mount,
	VESA 75x75
Dimensions (LxWxH) (mm)	232.4 x 285.2 x 44
Construction	Aluminum front bezel
Cutout Dimensions	267.2 x 214.4
Weight	
Weight	1.77 kg
Expansion Slots	
Expansion Slots	1 x Full-size PCIe Mini slot (with mSATA/PCIe/USB signal)
	1 x Full-size/Half-size PCIe Mini slot (PCIe signal only)
LCD	
LCD Color	16.2M
Pixel Pitch (mm)	0.264 (H) x 0.264 (V)
Viewing Angle (H-V)	160° / 140°
Touch	
Touch Screen	5-wire resistive type flat touchscreen
I/O Interface	
I/O Interface	1 x AT/ATX Switch
	1 x Power Switch
	1 x RS-232 (RJ-45)
	1 x RS-422/485 (DB-9)
	2 x USB 3.2 Gen1x1
	2 x USB2.0
	1 x Audio (line-out)
	1 x Reset Button
	2 x LAN (GbE)
	1 x Power In (9-30V Lockable power jack)

Ordering Information

PPC-F10B-BT-J1/2G/R-R12	10.4" 400 cd/m2 SVGA Panel PC with Intel® Celeron® Processor J1900, TDP 10W, 2GB DDR3L RAM, black color, Powder paint, 9-30V DC input, resistive touch window, R12
-------------------------	--

Packing List

1 x PPC-FxxB-BTi Panel PC	1 x User Manual
1 x Touch Pen	1 x Power Cord
1 x Screw Pack	1 x Power Adapter