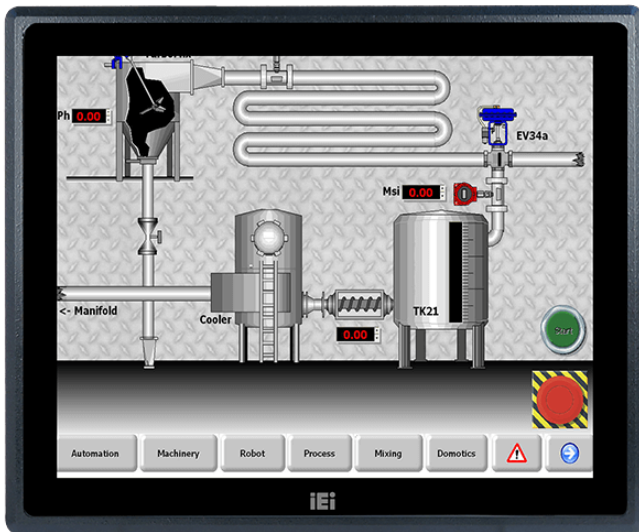


PPC-F17B-BT

17" Fanless Intel® Bay Trail Solution

Features

- » Intel® Celeron® J1900 quad-core SoC
- » Robust IP65 aluminum front bezel
- » Aesthetic ultra-thin bezel for seamless panel mount installation
- » Projected capacitive multi-touch and resistive single touch options
- » Dual full-size PCIe Mini card expansion
- » 9V~36V DC wide range DC input



Specifications

Display	
Backlight MTBF(hrs)	50000
Brightness(cd/m2)	350
Contrast Ratio	800:1
LCD Size	17"(5:4)
Max Resolution	1280 (W) x 1024 (H)
Environment	
Humidity	10% to 95% (non-condensing)
IP Level	IP 65 compliant front panel
Operating Temperature	-10°C~50°C (14°F~122°F)
Storage Temperature	-20°C~60°C (-4°F~140°F)
I/O Interface	
I/O Ports and Switches	2 x RJ-45 LAN Port
	2 x USB 3.0
	2 x USB 2.0
	1 x HDMI™ output
	2 x RS-232
	1 x RS-232/RS-422/485
	1 x VGA
	1 x 9 V~36 V DC jack (4-pin)
	1 x 9 V~36 V DC terminal block
	1 x Line-out (PPC-F15B and PPC-17B only)
	1 x Power switch
LCD	
LCD Color	16.7M
Pixel Pitch (mm)	0.26 x 0.26
Viewing Angle (H-V)	170° / 160°
Physical Characteristics	
Cutout Dimensions	323 x 390

Dimensions (LxWxH) (mm)	341.4 x 408.4 x 51.8
Power	
Power adapter	9V~36V DC
Touch	
Touch Controller	5-wire resistive single-touch type flat touchscreen 3H
Touch Screen	2-point projected capacitive type touchscreen 6H
Weight	
Weight	5 kg

Ordering Information

PPC-F17B-BTi-J1/2G/R-R13	17" 350 cd/m2 SXGA Panel PC with Intel® Celeron® Processor J1900, TDP 10W, 2GB RAM*1, support iRIS-2400, black color, 9-36V DC input, resistive touch window with AG coating, R13
--------------------------	-----------------------------------------------------------------------------------------------------------------------------------------------------------------------------------

Packing List

1 x PPC-FxxB-BTi Panel PC	1 x User Manual
1 x Touch Pen	1 x Power Cord
1 x Screw Pack	1 x Power Adapter